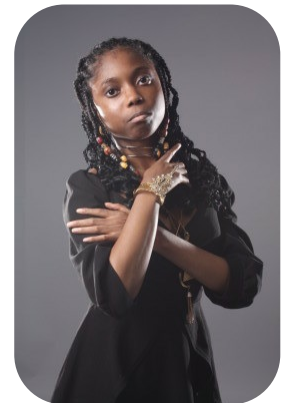
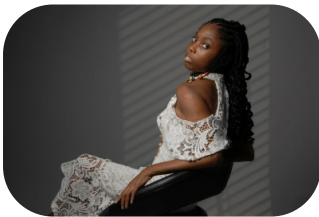
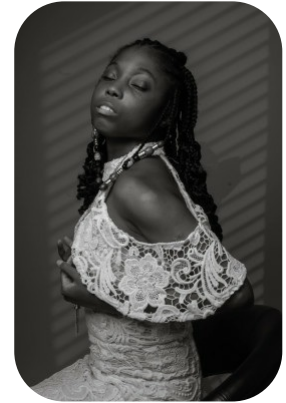
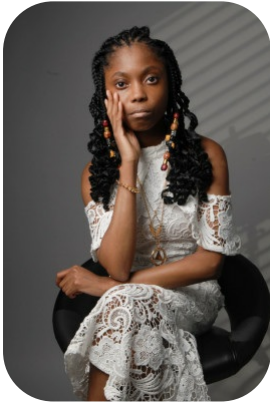
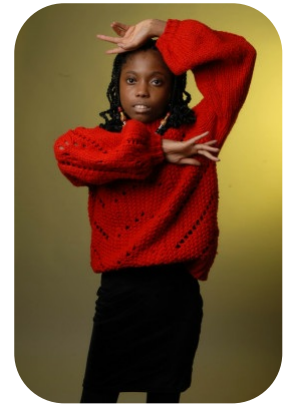


FM Marie Dominique Kpaloue Tetea



Age: 16-20 Height: Eye Colour: Accent:
Gender:F 4ft11inch Black London
Location: Weight: Waist: 25
London 39kg Bust: 32
Drives: No Shoe Size: Hips: 29
5
Hair Color:
Black

Talents
DISABILITIES



Additional Talents:

FOR ANY INQUIRIES PLEASE CONTACT US

0207 834 66 60 - Office

www.fusionmng.com

cast@fusionmng.com

FM FUSION
MANAGEMENT
TALENT & MODEL MANAGEMENT AGENCY